



PUBLISHED BY: E.S.J. VAN DAM LTD, Box 300, Bridgenorth, Ontario, Canada K0L 1H0
 phone (705) 292 - 7013 toll free phone: 1 - 866 - EVANDAM (382-6326)
 email: esvandam@esjvandam.com www.canadarevenuestamps.com
 Member : A.S.D.A., C.S.D.A., A.P.S., B.N.A.P.S., R.P.S.C., A.R.A., C.R.S. etc. © 1970 - 2011



TOLL FREE - ORDER LINE
PHONE: 1 - 866 - EVANDAM (382-6326)

OFFICE WILL BE CLOSED
 April 1 - April 12, May 9 - May 16, 2011

In this issue some very **EXCEPTIONAL MANITOBA** revenues from the famous **Pitblado** Manitoba revenue collection. This collection was formed many years ago and is loaded with exceptional Manitoba revenue material.

For a great selection of Canada Revenues, Semi-Official Airmails, Duck & Conservation stamps visit **CANADAREVENUESTAMPS.COM**

Provincial Wildlife Conservation stamps have unfortunately been discontinued for all provinces except Quebec. The last year the provincial issues were issued was 2008. Federal Wildlife issue and BC & Manitoba fishing stamps continue to be in use.

Convenient **monthly, no interest, installment payment plans available**. Just call me on my toll free number and we can discuss what will work for you.

Orders filled in order received. If you get my voice mail, please leave a detailed message with items you wish to order, **credit card # , expiry date, name on card + 3 digit security code from reverse**. I usually respond within 24 - 48 hours unless I am out of town, in which case I will contact you upon my return.

Cdn\$ and US\$ exchange rate fluctuates a lot. For the convenience of our US customers I will accept check/cash payments in US\$ or Cdn\$ at par. Rate subject to change without notice. All prices shown are in Cdn \$. It is easiest to pay by credit card, your card company will handle the exchange rate.

All credit card transactions processed in Cdn\$.

"Interac e-transfers" payments welcome. This is an almost instant, very convenient way to make payment directly from your bank account to ours . Currently only available for Canadian banks, etc.

over **13300 items listed** on **www.canadarevenuestamps.com**

the #1 source for Canada revenues, Telephone & Telegraph Franks, Duck stamps, Wildlife Conservation stamps & Canadian Semi-Official Air Mail stamps & covers. I look forward to receiving your order.
 Erling van Dam

NO INTEREST
 monthly payment plans available on most items

I WILL HAVE A BOOTH AT

ORAPEX 2011 - Ottawa
 R. A. Centre, curling rink, 2451 Riverside Drive,
 Saturday April 30, 2011 - 10 am to 6 pm
 Sunday May 1, 2011 - 10 am to 4 pm

Royal 2011 - Dorval near Montreal
 1450 Dawson, Dorval, QC
 Friday May 13 - 10 am - 6 pm
 Saturday May 14 - 10 am - 6 pm
 Sunday May 15 - 10 am - 4 pm



Manitoba June 1877 PROVISIONALS
 Superb used copies of **ML13 - 10c red & black, ML15 - 25c red & black ML10 - 50c with black CF.**

Both provisionals have **matching control #21**. An exceptionally rare piece. Ex Pitblado. In this exceptional condition should easily be worth \$2500. If you want the very best \$1995



ML14 - 20c red & black UNUSED on piece. Signed A. Begg, manuscript control # 54. No cancel of any kind. **Unused is unpriced in our catalogue.** Mr. Pitblado notes that this is the highest control # he has seen. An exceptional rarity. Ex Pitblado - \$1495

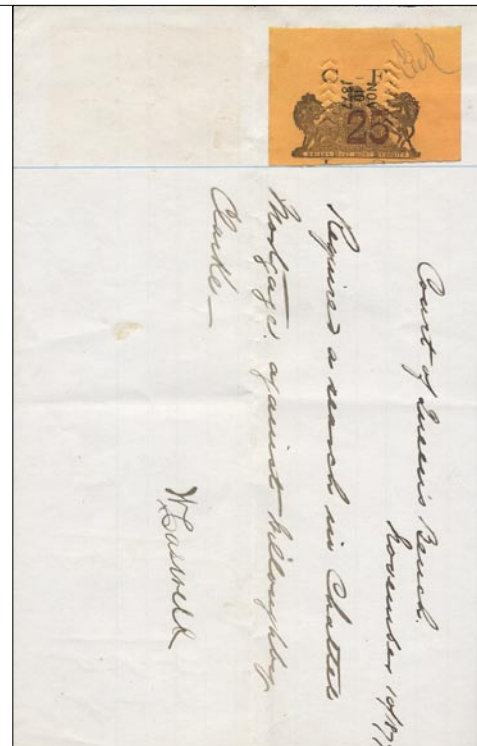


ML14 - 20c red & black used. Signed A. Begg, manuscript control #51. An exceptional used copy and I consider this Superb condition for this rarity. Ex Pitblado \$1250



ML13 - 10c red & black. each signed "A. Begg" and with manuscript control numbers #42 and #43. Both copies are **SUPERB used** with enormous margins. Copies in this condition should sell for at least double catalogue = \$2400 .. my price... \$1895

SATISFACTION GUARANTEED OR MONEY BACK.



ML19a - 25c red & black, signed EWR. (E W Romans was the deputy provincial treasurer) dated **Nov. 10, 1877.** **SUPERB** used with huge margins on piece. Clearly shows the top part of "L S" at the bottom of the stamp and is **UNLISTED THUS.** Showpiece. Ex Pitblado - \$1895



ML19 - 25c red & black, signed EWR. (E W Romans was the deputy provincial treasurer) dated **Nov. 21, 1877.** 2 copies **SUPERB** used with enormous margins, on piece. **WITHOUT "L S" at bottom.** There were clearly 2 different types of the ML19 provisional and this piece clearly proves it. Very important Showpiece. Ex Pitblado - \$1995



ML15 - 25c red & black, signed A. Begg, manuscript control #59. **Only 60 copies known.** Exceptional copy on piece. Ex Pitblado - \$1195

DISCOUNTS THIS PAGE: orders over \$50 - 5% discount, over \$500 - 10% discount over \$2500 - 15% , over \$7500 - 20% discount

ORDERING INFORMATION

**Satisfaction Guaranteed or
Money Refunded.**

Payment with order please, *interest free terms* may be arranged on large purchases.

Prices in Canadian \$, unless noted otherwise. **MINIMUM Credit card order \$15**

FOR PAYMENT IN US\$

Cdn \$100 = US\$102

Rate subject to change without notice!

POSTAGE & PACKING

Orders under \$200 - to Canada add \$2, to USA add \$3, all other countries \$4

ORDERS \$200 and up

Add \$8.50 for postage & registration to Canada

Add \$15 for postage & registration to USA

Add \$17 for postage & registration to Overseas

Orders over \$500 - we pay postage & registration costs, except albums & catalogs

Only orders shipped by registered mail are covered by our insurance policy.

All credit card transactions are processed in Canadian \$ and will be converted by your credit card company to your currency. Minimum credit card transaction \$15.00



current exchange rate

Cdn \$100 = US\$104



Immediate Refund - for items sold out.

Refunds under \$10 - will be made in mint Canadian postage stamps at face value,

Canadian Customers: add 5% GST please
B.C. residents: add 12% HST

Maritime & Ontario clients add 13% HST
Items purchased on payment plan will be shipped once payment in full has been received.

SUBSCRIPTION INFORMATION

we do not send out renewal notices!

IF ADDRESS LABEL READS "exp 03 /11"

(March 2011) or earlier or is **highlighted in yellow** then **your subscription has expired.**

To continue receiving ReveNews bulletins, price lists, etc. please make a purchase from this newsletter or send your subscription fee in the amount shown below. Paid subscriptions are extended for one full year.

ANNUAL SUBSCRIPTION RATES

B.C., Ontario - Cdn \$28.20 (incl. HST)

Maritimes - Cdn \$28.20 (incl. HST)

rest of Canada - Cdn \$26.75 (inc. GST)

USA - C\$36, rest of World - C\$50

The 2009 Canadian revenue

stamp catalogue by E.S.J. van Dam
in stock for immediate delivery

The *definitive catalogue* for
Canada & provinces Revenues,
Telephone & Telegraph franks,

Duck, hunting & Wildlife Conservation stamps.

Spiral bound - 180 pages - 960 colour photos
to BC, Ontario & Maritimes incl. HST Cdn \$28.19
rest of Canada incl GST Cdn \$26.20
to USA Cdn \$28.95
Overseas Cdn \$35.95

prices include Air Mail shipping,

Private Insurance & any applicable taxes

New in Stock - Lots, collections, documents, unusual items, etc. Some great buys here - these will not last.

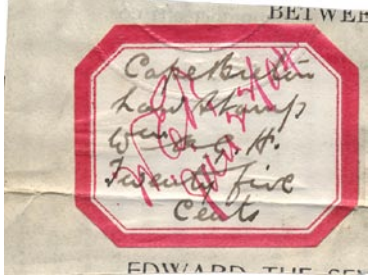
1. 1954-55 Ontario Individual **LIQUOR PERMIT** booklet, green binding. Superb condition.....\$65
2. 1924 Victoria B.C. Supreme Court with **PINPERFS BCL26b, 27b** - \$1 & \$5. Rare on document\$159
3. 1910 Quebec **QST2,3-10c, 20c** on The General Animals Insurance Co. of Canada transfer doc\$59
4. 1910 Quebec **Ottawa district** with rare document **QL39-70c blue** law stamp + **QR10a-50c black Beaver WATERMARKED**. Documents from this region are rare. Spectacular.....\$395
5. Montreal, QC, 193- unused "The Dominion Bank" check, fancy coat of arms at left.....\$5
6. Toronto 1920's Bell Telephone Co. receipt with **FX36-2c blue with "B.T." PERFIN** affixed and with attractive Bell shaped paid cancel. Very attractive item\$30
7. **FEG3** - 75c vermilion Geo. V Elec & Gas Inspection on 1930-1940's Electricity meter certificate.....\$10
8. **FEG2** - 60c vermilion Geo. V Elec & Gas Inspection on 1930-1940's Electricity meter certificate.....\$10
9. **FWS5** - 25c blue strip of 4 on Special War Savings Certificate form. Black on white multi-part foldable form explains the rates, how to use etc. used at Hi-Art theatre, Weyburn, SK. Very Fine.....\$60
10. similar form with **FWS5-25c blue** + **FWS8-25c carmine**. Folded. very good to Fine used\$35
11. **OST16** - 3c on 2½ mills horizontal strip of 5 on large share certificate clipping, scarce multiple\$15
12. **OST16** - 3c on 2½ mills vertical strip of 5 on small share certificate clipping, scarce multiple\$15
13. **OST3-3c, 5-15c, 7-30c, 9-60c, 11-\$1.50, 16-3c** on 2½ on share certificate clippings, nice\$10
14. **FWT18-2c coil stamp** on attractive 1919 Peterborough, ON, Quaker Oats Co. cheque.....\$15
15. **FCH1a-2c red embossed war tax** imprinted on 1919 Vancouver, **CANADIAN PACIFIC RAILWAY COMPANY** Bank of Montreal \$37.90 cheque. A very unusual and scarce CPR items\$45
16. **FCH1a-2c red embossed War Tax** imprinted on 1919 Pugsley, Dingman & co. Bank of Montreal \$159 cheque. "Comfort Soap" logo and design at upper right. Scarce use and attractive.....\$35
17. **FWT9-3c War Tax** and **QST10-2c Stock Transfer** on 1930 Dominion Iron and Steel Company of Nova Scotia Preferred share certificate. Very Fine and very scarce use.....\$50
18. **FCH1a-2c red embossed War Tax** imprinted on 1921 London Printing & Lithographing Co, London, ON \$33.63 **Molsons Bank** check payable to Dominion Express Co. scarce use & attractive...\$35
19. **FCH1a-2c red embossed War Tax** imprinted on unused Hillcrest Farm, Iroquois Falls, ON Imperial Bank of Canada Iroquois Falls branch. Rarely seen private usage of FCH1.....\$35
20. **OL19-30c FF raised period after 2nd "F"** on 1868 attractive county of York SUMMONS, black text on blue paper. "Victoria by the grace of God of UK of GB, Ireland, Queen defender of faith" minor separation to be expected on 140+ year old document. scarce "Walter McKenzie, Toronto" cancels ...\$45
21. very Rare Very Fine **FWM35-10c red #'s, 50a-75c, 52a-\$1.50 JUMP # Pair, 55a-\$5** on VF 1922 Weights & measures "Certificate for the Trader" document. I believe this is the only FWM35 I have seen genuinely used on document and together with the jump # pair makes this Exhibition piece\$350
22. scarce **FX96-3c blue coil stamp** on 1940's - 50's CIBC sight draft.....\$4
23. scarce **FX96-3c blue coil stamp** on 1940's **United-Rexall Drug Co.,** B of M, promissory note.....\$6
24. **FG31a** - \$3 blue control #, dry print on 1930's **Dominion of Canada Gas Meter certificate**\$15
25. similar, but with **horizontal pair of FG31a** - \$3 blue control #, dry print\$20
26. similar, but with **horizontal strip of 3 of FG31a** - \$3 blue control #, dry print\$30
27. **FEG9-\$2 and FEG11-\$10** on 1930's Dominion of Canada Gas Meter Certificate\$20
28. **FSC21-10c blue** on small 1950's Supreme Court of Canada "Praecepte for Inscription"\$35
29. red Imperial Oil **Excise Tax Meter "49086"** on 1940's Vancouver, BC Cdn Bank of Commerce check..\$15
30. **FX36-2c blue** with scarce **"CCC" PERFIN** on 1920/30's Canada Cement Co. check, CIBC.....\$25
31. **FX64-3c** on 1930/40's **Canada Cycle and Motor Co. Ltd** CB of C check. Unusual.....\$2
32. scarce **FX46-2c blue coil** on 1930 Wilkinson-Kompass, Hamilton, ON promissory note.....\$9
33. **FX36-2c** on attractive 1927 **Dunlop Tire & Rubber goods co.** draft, unusual.....\$12
34. **1898 Bank of Montreal, London, England** check for **£50** with 1d red British embossed revenue\$15
35. **FWS1-25c orange War Savings.** 2 VF perf all around copies on lightly toned official thrift card.....\$129
36. Quebec **QST10-2c blue horizontal strip of 3** + **QST12-10c** on 1919 share transfer receipt, scarce\$25
37. 1937 Elmira, ON Miller & Co \$1350 share purchase receipt with 27 copies **FX42-10c excise**, nice.....\$29
38. **FCH1a** on small 192_ unused Royal Bank of Canada West Fort William, ON branch check\$10
39. **QL103-50c black and QL107-\$4 grey** overprinted "**Loi de Faillite-Bankruptcy Act**" on very rare Quebec Superior Court "Judgement". Very Fine\$295
40. **NBT11*** - 1c 1941 Coat of Arms **TOBACCO Tax complete book with 25 panes.** Cat \$187.50.....\$129
41. **C158TP- 1880** cigarettes 1/20 lb red **IMPERF pane of 12**, watermarked, no control #, **PROOF** with **MAJOR diagonal offset** on reverse. A very unusual and attractive showpiece.....\$229
42. **1880, 1883 Canada cigarettes and tobacco strip stamps** in complete sheets & large multiples. 100 sheets including **proofs, perforation errors, pre-printing crease**, etc. A total of 1223 stamps. Spectacular group, in 3 mint sheet files, that will be hard to duplicate.....\$5995
43. 1956 large part document with French 2 each **5fr** and **85fr** Timbre Fiscal + 1 pair **100fr** Affaires Etrangere (foreign affairs) and **FCF2-50c** and **FCF4-\$2 Consular Fees** affixed. Nice cancels.....\$129
44. **BCL57-\$10 red** and **rare BCL61-\$5 red brown rouletted** on \$290,751.00 1980 BC Wholesale Chattel mortgage. The \$5 is a very scarce stamp especially on document.....\$249
45. **FG3-\$1** on small 1889 Montreal "GAS INSPECTORS OFFICE" document, very thick high quality watermarked laid paper. Rare very early document. Superb condition\$150
46. **FG10-50c** on small 1886 Montreal "GAS INSPECTORS OFFICE" document, very thick high quality watermarked laid paper. Rare very early document. Superb condition\$150
47. 1921 "**Bank of Hamilton**" Montreal branch "**War Tax on overdraft**" advise with **FWT8-2c War Tax, FWT13-10c War Tax** and **FX7-20c Excise Tax** affixed to make up 32c rate. Items this bank are rare ...\$30
48. **FWT8** - 2c brown **War Tax** on rare Nov 25, 1918 "Duplicate" **Northern Crown Bank 17.50 kronor** draft to Sweden complete with notice from Dahl Steamship Agency. The only such item I have handled or seen. Documents from this bank are rare since it was acquired by the Royal Bank in 1918.....\$125
49. **NSH3-50c dark green** on 1900 Supreme Court of Nova Scotia "**Writ of Summons for Service out of Jurisdiction**". Very Fine condition. Nova Scotia documents rarely seen\$50
50. Quebec **QST10-2c blue pair** + single + **QST13-20c** + **QST15-\$1** on share transfer receipt, scarce.....\$35
51. similar but with 7 copies of **QST12** - 10c (1 has fault from staple removal).....\$30

DISCOUNTS THIS PAGE: orders over

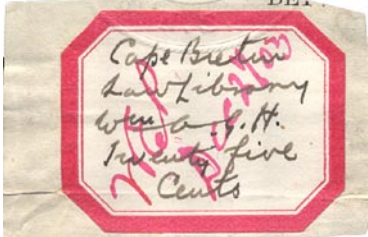
\$50 - 5% discount, over \$500 - 10% discount
over \$2500 - 15% , over \$7500 - 20% discount

CAPE BRETON PROVISIONAL STAMPS on piece.

These are rarely seen and missing from virtually every collection. File folds on these stamps are typical due to the size of the stamps and the location where these were applied on the document. Very few are known without file folds. All are on small pieces of document and are guaranteed genuine. **ESJ van Dam Ltd Colour Photo Certificate** of Authentication accompanies each stamp.



NSC4 - Rare "Cape Breton Law Stamp". usual file fold very rare stamps. cat \$1500 - \$895



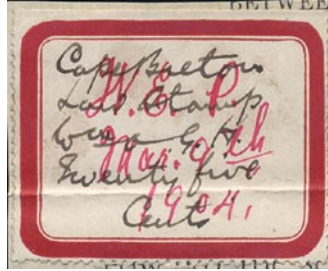
NSC6 - Rare "Cape Breton Law Library Twenty Five Cents". usual file fold. Cat \$2500 - \$1795



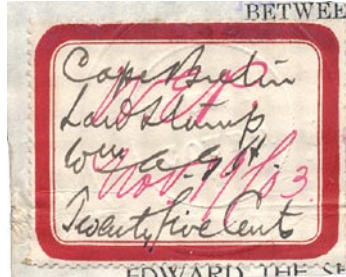
NSC7 - Rare "Cape Breton Law Stamp Fifty Cents". Trivial file bend near bottom border of stamp. Cat \$2500 - \$2100



NSC10 - Rare "Cape Breton Law Stamp" with printed "Twenty Five Cents" at bottom. usual file fold. Cat. \$3000 - \$2295



NSC11A - Rare "Cape Breton Law Stamp Twenty Five Cents". usual file fold. Cat. \$2500 - \$1495



NSC11Ab - Rare "Cape Breton Law Stamp Twenty Five Cents" in 1 line. usual file fold. Cat. \$3000 - \$2195



ML19 - 1877 25c red & black, EWR. F/VF used, huge margins all around ex Pitblado - \$650



QL96 - \$3 green o/p "BANKRUPTCY ACT-LOI DE FAILLITE". An incredibly rare stamp - much undervalued. Missing from most collections - \$499.



MV8* - 50c MANITOBA VACATION PAY. A beautiful fresh example of this very rare stamp. Cat \$600 only.... \$500



1945 - NEWFOUNDLAND NT163 red brown cigarette IMPERF BLOCK of 4 - \$60 horizontal imperf pair - \$35 vertical imperf pair - \$35



Rare - "Bank of Montreal" Domestic Travellers Cheques.

These were treated like cash and normally would have been shredded once cashed. A rare revenue item. Each has **FX64-3c** blue excise tax stamp on the back as required when cashed. Only 1 to 4 of each available.

Intricately engraved by the Canadian Bank Note Company Ltd

\$10 green Domestic Bank of Montreal travellers cheque with **FX64** - \$25
\$20 blue Domestic Bank of Montreal travellers cheque with **FX64** - \$25
\$50 brown Bank of Montreal travellers cheque with **FX64** - \$40

1897 CANADA CIGARETTE STAMPS

with rarely seen "OTTAWA No 1" Plate imprints. Lovely fresh condition. There might be the odd fold, poor centering, minor separation, etc. as is to be expected on stamps that are over 110 years old. Only 1 to 2 of each available.



- C289*** - 50 cigarettes rouletted, blue, pair "OTTAWA No 1" imprint \$60
- C290*** - 100 cigarettes, blue single, p. 12 "OTTAWA No 1" imprint \$45
- C292*** - 50 cigarettes, green, rouletted pair "OTTAWA No 1" imprint \$60
- C293*** - 100 cigarettes, green, rouletted pair, "OTTAWA No 1" imprint \$60
- C296*** - 100 cigarettes, red, rouletted pair, "OTTAWA No 1" imprint \$60



OST16a - rare "TRANSF " Error.

Spectacular strip of 4 with rare variety on the 2nd stamp from the right. On piece of Stedman Bros share certificate, very rare in multiple.. \$299

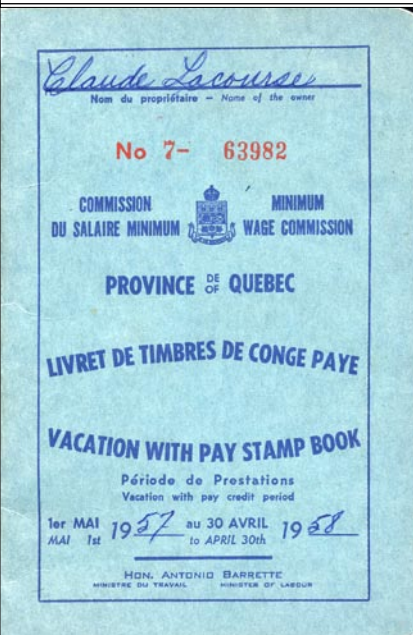
Complete QUEBEC VACATION PAY book.

1957 - 58 with a large amount of Vacation pay stamps inside. As far as I recall this is the only such book I have seen or handled. This book probably contains the single largest holding of used Quebec Vacation pay stamps.

Included are: 12 x **QV1-1c**, 15 x **QV2-2c**, 21 x **QV3-15c**, 30 x **QV4-10c**, 20 x **QV5-25c**, 14 x **QV6-50c**, 14 x **QV7-\$1** and 5 x **QV8-\$2**.

Total catalogue value of just the stamps is \$2477.50

This unique book!
\$1995



DISCOUNTS THIS PAGE: orders over \$50 - 5% discount, over \$500 - 10% over \$2500 - 15% , over \$7500 - 20%

1880 CANADA CIGARETTE STAMPS

These beautiful stamps are mostly in F/VF unused condition without gum as issued. The cigarette strips normally come in sheets of 24, 30 or 40 which are made up of 2 panes each of 12, 15 or 20 strips. Generally there is a gutter between the 2 panes. Because of the layout of these panes you can actually make vertical and horizontal pairs. Horizontal pairs will generally be imperf between. Multiples and strips are small enough to fit into standard 3 ring binders and albums and will make a very attractive display. The sheets have been folded between panes, thus horizontal pairs usually have a light fold between the stamps. Catalog numbers are from the 1976 Lee Brandom catalogue. ° = used, TP= Trial Proof, CP=Proof overprinted "CANCELLED". All are F/VF unused unless noted otherwise.



C101TP
vertical pair
shown at 60%
of actual size



C101

these stamps are shown at 70% of actual size



C102TP horizontal pair - shown at 50% actual size

single horiz vert
pair pair pair



C102TPa - very strong offset on back

| | black - no rosette at left corner - 120 x 15 mm | single pair | horiz pair | vert pair |
|-------------------------|--|-------------|------------|-----------|
| PORT OF HAMILTON | | | | |
| C101 | - 1/20th lb, p. 12, no wmk, blue control # | 12.50 | 25.00 | 25.00 |
| C101TP | - PROOF , no control # | 12.50 | 25.00 | 25.00 |
| C101TPa | - PERF ERROR . 1 row of perms diagonal, rest normal available in block of 4 only | 70.00 | -- | -- |
| C102TP | - 1/20th lb, PROOF , no #, p.12, watermark | 7.00 | 14.00 | 14.00 |
| C102TPa | - similar, but with very strong offset on back that appears like regular printing | 15.00 | 30.00 | 30.00 |
| PORT OF TORONTO | | | | |
| C108 | - 1/20th lb, p.12, no wmk | 15.00 | -- | 30.00 |
| C108TP | - PROOF , no control # | 15.00 | -- | 30.00 |
| C108TPCP | - similar to above, but o/p " CANCELLED " | 45.00 | -- | -- |
| C109TP | - 1/20th lb, p. 12, wmk, PROOF , no # | 10.00 | 20.00 | 20.00 |
| C111TP | - 1/20th lb, imperf, no wmk, PROOF , no # | 15.00 | -- | -- |
| C112TP | - 1/20th lb, PROOF , no #, wmk, imperf | 6.50 | 13.00 | 13.00 |
| PORT OF WINDSOR | | | | |
| C115TP | - 1/20th lb, p.12, wmk, PROOF , no # | 15.00 | 30.00 | 30.00 |

| | | | | |
|--|--|-------|-------|-------|
| C117TP | - 1/20th lb, imperf, wmk, PROOF , no # | 6.50 | 13.00 | 13.00 |
| C117TPa | - similar, but with offset on back | 10.00 | -- | 20.00 |
| C117TPCP | - 1/20th lb, imperf, wmk, PROOF , no # overprinted " CANCELLED " | 45.00 | -- | -- |
| red - no rosette at left corner - 120 x 15mm - PORT OF HAMILTON | | | | |
| C120 | - 1/20th lb p.12, no wmk, blue # | 10.00 | 20.00 | 20.00 |
| C120TP | - PROOF , no # | 6.50 | 13.00 | 13.00 |
| PORT OF MONTREAL | | | | |
| C125TP | - 1/20th lb, p.12, no wmk, PROOF , no # | 6.50 | 13.00 | 13.00 |
| PORT OF TORONTO | | | | |
| C128 | - 1/20th lb, p.12, no wmk, blue # | 15.00 | -- | 35.00 |
| C128TP | - PROOF , no # | 6.50 | 13.00 | 13.00 |
| C128TPCP | - as above, overprinted "cancelled" | 45.00 | -- | -- |
| PORT OF WINDSOR | | | | |
| C132 | - 1/20th lb, p.12, no wmk, blue # | 17.50 | -- | 30.00 |
| C132TP | - PROOF , no # | 17.50 | 35.00 | 35.00 |
| C132TPCP | - as above, overprinted "cancelled" | 40.00 | -- | -- |



C143

similar to previous issue - but with additional port code and rosette at left

| | black - Port open | single pair | horiz pair | vert pair |
|----------|---|-------------|------------|-----------|
| C138 | - 1/20th lb, "A-5", p.12, blue #, wmk | 17.50 | -- | 35.00 |
| C139TP | - 1/20th lb, "A-5", imperf, PROOF , no # | 7.50 | 20.00 | 20.00 |
| C139TPCP | - as above, but overprinted "cancelled" | 45.00 | -- | -- |
| C143 | - 1/10th lb, "A-4", p. 12, wmk | 20.00 | -- | -- |

| | | | | |
|------------------------|--|-------|-------|-------|
| C150 | - 1/10th lb, "MONTREAL M-4", p.12, wmk | 7.50 | 15.00 | 15.00 |
| red - Port open | | | | |
| C156 | - 1/20th lb, "A-25", p.12, wmk, blue # | 20.00 | -- | 40.00 |
| C158TP | - 1/20th lb, "A-25", imperf, wmk, PROOF | 6.50 | 13.00 | 13.00 |
| C161 | - 1/10th lb, "A-24", wmk, blue # | 25.00 | -- | -- |



C178

similar to previous issue - now inscribed "NOT MORE THAN"

| | black - Port open | single pair | horiz pair | vert pair |
|---|---|-------------|------------|-----------|
| C164 | - 1/20th lb, "A-6", p.12, wmk, blue # | 30.00 | -- | -- |
| C164TP | - similar, but PROOF , no # | 20.00 | -- | -- |
| black - Port of Hamilton or as noted | | | | |
| C169 | - 1/20th lb, "H-6", p.12, wmk, blue # | 25.00 | -- | -- |
| C170TP | - 1/20th lb, "H-6", imperf, wmk, PROOF , no # | 7.50 | 15.00 | 15.00 |
| C177 | - 1/20th lb, toronto "C-6", p.12, no wmk | 20.00 | -- | -- |
| C178 | - similar, but watermarked | 10.00 | -- | 20.00 |
| C178CP | - similar, but overprinted "cancelled" | 45.00 | -- | -- |
| C181 | - 1/20th lb, Windsor, "C-6", p.12, no wmk | 25.00 | -- | -- |
| C182 | - similar, but watermarked | 7.50 | 15.00 | 15.00 |
| red - Port open | | | | |
| C186 | - 1/20th lb, "A-26", p.12, no wmk, blue # | 25.00 | -- | -- |
| C188 | - similar, but watermarked | 7.50 | -- | 15.00 |
| C188TP | - similar, PROOF , no # | 15.00 | -- | 30.00 |
| C189TP | - 1/20th lb, "A-26", imperf, wmk, PROOF , no # | 6.00 | -- | 12.00 |
| red - Port of Hamilton | | | | |
| C195 | - 1/20th lb, "H-26", wmk, p.12 | 25.00 | -- | -- |
| C195TP | - similar, but PROOF , no # | 10.00 | -- | 20.00 |
| C196TP | - 1/20th lb, "H-26", imperf, wmk, PROOF , no # | 10.00 | -- | 20.00 |
| red - Port of Montreal | | | | |
| C200 | - 1/20th lb, Montreal "M-26", p.12, wmk | 10.00 | -- | 20.00 |
| C200CP | - as above, but overprinted "cancelled" | 45.00 | -- | -- |
| C201TP | - as C200, but rouletted, PROOF , no # | 15.00 | -- | 30.00 |
| C203TP | - as above, but imperf, watermarked | 6.50 | 13.00 | 13.00 |
| red - Port of Toronto | | | | |
| C206 | - 1/20th lb, Toronto "C-26", p.12, wmk | 25.00 | -- | -- |



C216TP

| | | | | |
|------------------------------|---|-------|----|----|
| red - Port of Windsor | | | | |
| C209 | - 1/20th lb, "G-26", p.12, watermark | 20.00 | -- | -- |
| C209TP | - similar, but PROOF , no # | 20.00 | -- | -- |
| C210TP | - 1/20th lb, "G-26", imperf, wmk, PROOF , no # | 25.00 | -- | -- |

| | | | | |
|---------------------------------------|--|------|-------|-------|
| Series of 1883 - unwatermarked | | | | |
| C216TP | - 1/10 lb black, imperf, no control number | 7.50 | 15.00 | 15.00 |



C702

| 1880 - blue CIGARETTE CUSTOMS STAMPS - Type I, Port open | | | | |
|--|--|-------|----|----|
| C702 | - 1/20 lb blue, p. 12, wmk, A-60 | 15.00 | -- | -- |
| C702TP | - similar, but no control number | 15.00 | -- | -- |
| C704 | - 1/10 lb blue, p. 12, wmk | 15.00 | -- | -- |



C727TP

| type II, "NOT MORE THAN" around rosette at left, Port open or as noted | | | | |
|--|--|-------|-------|-------|
| C715 | - 1/20 lb blue, p. 12, no watermark | 15.00 | -- | -- |
| C716 | - 1/20 lb blue, p.12, wmk | 7.50 | -- | 15.00 |
| C722 | - 1/20 lb blue, p.12, wmk, HAMILTON | 7.50 | -- | 15.00 |
| C723TP | - 1/20 imperf, wmk, no control #, HAMILTON | 6.50 | 13.00 | 13.00 |
| C727TP | - 1/20 imperf, wmk, no #, MONTREAL | 7.50 | 15.00 | 15.00 |
| C736 | - 1/20 lb, p. 12, wmk, WINDSOR | 15.00 | -- | -- |
| C736TP | - 1/20 lb light blue, p.12, wmk, no #, WINDSOR | 10.00 | -- | 20.00 |
| C736TP | - 1/20 lb dark blue, p.12, wmk, no #, WINDSOR | 10.00 | 20.00 | 20.00 |

| | | | | |
|-------------------------------|---|-------|-------|-------|
| C195 | - 1/20th lb, "H-26", wmk, p.12 | 25.00 | -- | -- |
| C195TP | - similar, but PROOF , no # | 10.00 | -- | 20.00 |
| C196TP | - 1/20th lb, "H-26", imperf, wmk, PROOF , no # | 10.00 | -- | 20.00 |
| red - Port of Montreal | | | | |
| C200 | - 1/20th lb, Montreal "M-26", p.12, wmk | 10.00 | -- | 20.00 |
| C200CP | - as above, but overprinted "cancelled" | 45.00 | -- | -- |
| C201TP | - as C200, but rouletted, PROOF , no # | 15.00 | -- | 30.00 |
| C203TP | - as above, but imperf, watermarked | 6.50 | 13.00 | 13.00 |
| red - Port of Toronto | | | | |
| C206 | - 1/20th lb, Toronto "C-26", p.12, wmk | 25.00 | -- | -- |

DISCOUNTS THIS PAGE: orders over \$50 - 5% discount, over \$500 - 10% discount over \$2500 - 15% , over \$7500 - 20% discount

PROVINCE OF NEW BRUNSWICK

See all in full color on canadarevenuestamps.com

Please order by stock #. Many others in stock.

n.g.=no gum, o.g.=original gum, WMK=watermark

| stock cat# | description | price |
|------------|---|--------|
| 11231 | NBL1 10c blue F used, trace of a cancel | 3.50 |
| 6204 | NBL1 10c blue, VF used, with unusual 1884 dated cancel | 15.00 |
| 11232 | NBL1 10c pair F/VF, 1 short perf | 6.00 |
| 6203 | NBL1* 10c blue F/VF unused, n.g. Rare | 20.00 |
| 9403 | NBL1* 10c VF unused for this, no gum | 25.00 |
| 11234 | NBL2 20c VF used | 7.50 |
| 2407 | NBL2* 20c o.g. tiny thin, F/VF. cat \$15 | 11.00 |
| 9185 | NBL3 50c unpunched, light cancel, F used | \$.55 |
| 9184 | NBL3 50c unpunched, light cancel VG | 3.00 |
| 11237 | NBL3 50c VG used, corner crease | 1.00 |
| 11236 | NBL3 50c VG/F used | 3.00 |
| 11239 | NBL3 50c VG/F used pair | 7.00 |
| 9186 | NBL4 \$2 VG/F used | 3.00 |
| 9404 | NBL4* \$2 F/VF unused, no gum | 30.00 |
| 9188 | NBL5 10c F/VF used strip of 3, nice 1895 cancel, scarce multiple | 12.50 |
| 11826 | NBL5 10c superb used, brilliant colour | 15.00 |
| 11245 | NBL5 F/VF used, document crease | 1.00 |
| 11247 | NBL5 fine used pair | 6.50 |
| 11244 | NBL5* 10c no gum fine unused | 12.00 |
| 9405 | NBL5* 10c VF unused, no gum | 20.00 |
| 6209 | NBL6 20c F/VF used | 2.50 |
| 11248 | NBL6 VG used | 1.25 |
| 6208 | NBL6* 20c VG unused. cat. \$17.50 | 4.50 |
| 11252 | NBL7 used pair fine, light corner bend | 3.75 |
| 6210 | NBL7* 50c brown, F + unused, no gum | 27.50 |
| 2882 | NBL7a 50c chocolate Fine used | 15.00 |
| 11253 | NBL7a VG used, rare chocolate, cat \$25 | 15.00 |
| 7490 | NBL8 rare \$5 green engraved. tiny closed tear, most known copies of this rarity have faults. Current retail 225+ | 125.00 |
| 9406 | NBL8* rare \$5 Engraved. VF/Superb unused, no gum. Engraved. Very rare especially this nice and without faults | 450.00 |
| 9190 | NBL9 20c F/VF used | 20.00 |
| 9189 | NBL9 20c VG ctr | 12.00 |
| 7491 | NBL9* 20c verm, F/VF unused, no gum, very fresh | 20.00 |
| 5005 | NBL9* 20c vermilion uncanceled, n.g. Spectacular MISPERF. Only such stamp I have seen. light fold and bend | 129.00 |
| 11255 | NBL10 used F/VF | 22.00 |
| 11254 | NBL10 used F/VF, document crease | 15.00 |
| 9192 | NBL10 50c VF used | 35.00 |
| 9191 | NBL10 50c VG/F ctr | 20.00 |
| 7493 | NBL11 \$1 (2 small closed tears) cat. \$40 | 12.00 |
| 11256 | NBL11 used VG | 25.00 |
| 9408 | NBL11* \$1 Fine unused, n.g., tiny closed perf tear at top. cat \$50. Rare | 30.00 |
| 7494 | NBL12 \$5 green, small thin, but Very Fine appearance. cat \$27.50 | 8.00 |
| 6213 | NBL12 \$5 green. very light document fold. VF otherwise | 25.00 |
| 11258 | NBL12 used F/VF | 27.50 |
| 11257 | NBL12 used VF | 40.00 |
| 1482 | NBL12* \$5 Superb, no gum | 75.00 |
| 13147 | NBL13*NH 10c F/VF*NH, cat \$5.25 | 3.00 |
| 13146 | NBL13*NH 10c VF*NH, cat \$5.25 | 3.50 |
| 12670 | NBL14 20c x 2 distinct shades. 1 has fold. Used copies are quite scarce. VF | 15.00 |
| 12562 | NBL14* 20c F*NH Fine. cat \$5.25 | 3.00 |
| 12563 | NBL14* 20c F*NH. 1 pulled perf | 2.00 |
| 12559 | NBL14*NH 20c F/VF*NH. cat \$5.25 | 3.50 |
| 12561 | NBL14* 20c F/VF*NH pair. cat \$10.50 | 7.00 |
| 11261 | NBL14*NH 20c VF*NH | 4.00 |
| 12671 | NBL15 50c x 3 distinct shades. 2 are used, one is mint with gum | 20.00 |
| 11262 | NBL15* 50c very fine VLH | 6.50 |
| 2890 | NBL16 \$1 F/VF used pair with nice cds. rarely seen in multiples | 50.00 |
| 7094 | NBL16 \$1 purple, VF used, tiny perf thin. rarely seen. cat \$35 | 19.00 |

| | | |
|-------|--|--------|
| 7323 | NBL16 \$1 purple, VF/Superb centered, 1 short perf, april 11, 1962 cancel. Rare | 35.00 |
| 2889 | NBL16* \$1 Fine uncan, no gum | 30.00 |
| 1473 | NBL16* \$1 VF* | 40.00 |
| 9198 | NBL17 \$2 rare pair, very light cancel, ctd to top, very fresh | 60.00 |
| 1476 | NBL18* \$5 VF*NH, cat \$112.50 | 105.00 |
| 6402 | NBL20* 20c rouletted, VF*NH | 17.50 |
| 7322 | NBL23* \$2 blue rouletted, VF/Superb *NH, very rare. cat \$437.50 | 350.00 |
| 2884 | NBP1-6 20c-\$20 VF used complete. Rarely seen this nice | 275.00 |
| 1487 | NBP2 20c p. 11 3/4, rare pair, F+ | 45.00 |
| 8043 | NBP2 20c perf. 12, VF used | 22.50 |
| 11581 | NBP2 20c unusual probate cancel | 35.00 |
| 9412 | NBP2* 20c VF unused, n.g. Rare thus | 50.00 |
| 1038 | NBP3 50c document fold F/VF used otherwise. cat \$20 | 6.00 |
| 1488 | NBP3 50c VF used, unpunched | 28.00 |
| 11582 | NBP4 \$2 blue major plate scratch variety, bottom left to "B" in "PROBATE", only 1 that I have seen. perf 11 3/4 | 85.00 |
| 1491 | NBP4 \$2 p. 11 3/4 VF used | 55.00 |
| 6216 | NBP4* \$2 blue mint o.g., perf. 12. small perf fault + small thin. Rare. cat \$75 | 28.00 |
| 1489 | NBP4* \$2 blue, small thin, perf. 12, F+ | 40.00 |
| 11583 | NBP5 \$5 F/VF rare used pair, dark green perf 11 3/4 | 95.00 |
| 11584 | NBP5 \$5 green F used pair, scarce multiple perf 11 3/4, light bend at top | 75.00 |
| 6217 | NBP5 \$5 green, perf. 12. Fine used | 32.50 |
| 11585 | NBP5 \$5 used, superb, perf 12 | 75.00 |
| 1869 | NBP5 1904 document with strip of 3 of \$5. New Brunswick documents are very rare. Spectacular | 395.00 |
| 9413 | NBP6 \$20 F/VF used, rare | 100.00 |
| 4007 | NBP6 rare \$20 purple. perf 11 3/4. Superb used | 120.00 |
| 1494 | NBP7* 10c p.12, F/VF, n.g., cat \$95 rare | \$.85 |
| 1495 | NBP7* 10c perf 11 3/4, rare, no gum | 85.00 |
| 1498 | NBP8 50c scarce pair, F used, cat \$70 | \$.55 |
| 9414 | NBP8* 50c F/VF unused, n.g., rare | 65.00 |
| 11586 | NBP11 \$20 variety, VF used perf 12. broken outer frame-line, bottom right - unlisted | \$.300 |
| 1497 | NBP11 \$20 VG used, rare | 150.00 |
| 9199 | NBP12 50c VG/F ctd, rare, cat \$110 | 95.00 |
| 9201 | NBP13 rare \$5 Fine used | 150.00 |
| 1499 | NBP13* \$5 green engraved, n.g., F/VF, Cat. \$200, rare | 150.00 |
| 9394 | NBP13* \$5 light horizontal bend. VF+ unused, n.g. Exceptional and very rare | 200.00 |
| 6405 | NBP14* 10c brown, VF*NH Block of 4 | 13.50 |
| 13139 | NBP14* 10c, white paper, F/VF*NH | 3.00 |
| 13142 | NBP14a* 10c brown, yellow paper F*NH | 3.50 |
| 13141 | NBP14a* 10c, yellow paper VF*NH | 4.50 |
| 11263 | NBP14a*NH F/VF NH, corner block | 15.00 |
| 6409 | NBP15* 20c carmine VF*NH Block of 4 | 15.50 |
| 13145 | NBP15b* 20c F*NH, no graphics | 10.00 |
| 9204 | NBP16 50c VF used | 10.00 |
| 6411 | NBP16b* 50c green no graphics, VF*NH | 15.00 |
| 1480 | NBP17* \$2 F*NH | 35.00 |
| 9206 | NBP17* \$2 VF* | 30.00 |
| 9396 | NBP19* rare \$20 F/VF* | 250.00 |
| 9207 | NBP19* rare \$20 VF*NH | 300.00 |
| 3517 | NBP22* 20c red rouletted, VF*NH BLOCK OF 4. cat \$25 | 15.00 |
| 13150 | NBP22* 20c rouletted VF*NH. cat \$6.50 | 4.50 |
| 3518 | NBP23* 50c pale green + 50c blue green. distinct shades VF*NH. Cat \$18.75 | 12.00 |
| 13154 | NBP23* 50c rouletted VF*NH. cat \$9.35 | 6.00 |
| 4666 | NBP26* Rare \$20 rouletted, VF*NH | 275.00 |

TOBACCO TAX - issued without gum

| | | |
|-------|--|-------|
| 13249 | NBT1* 1c black on white, RARE | 40.00 |
| 9400 | NBT2* 2c VF* WATERMARK | 70.00 |
| 8896 | NBT3* 3c black on blue, VF, WMK | 45.00 |
| 5388 | NBT3* 3c black/ blue, VF, with imprint | 25.00 |
| 7432 | NBT3a* 3c cpl booklet pane. WMK, VF | 75.00 |

| | | |
|-------|--|--------|
| 5511 | NBT4* 5c black on pink with IMPRINT, VF/Superb unused, no gum as issued | 15.00 |
| 5391 | NBT4* 5c black on pink with imprint WATERMARKED. VF unused | 22.50 |
| 13137 | NBT4a* 5c black on pink booklet pane with imprint. light wrinkle at bottom right corner, VF otherwise. Cat. \$35 | 17.50 |
| 7433 | NBT4a* 5c black on pink complete booklet pane with imprint at top. VF | 35.00 |
| 7434 | NBT4a* 5c black on pink booklet pane with imprint at top. WATERMARKED, VF | 65.00 |
| 12551 | NBT5* the rare 1c black on white with numeral on right | 375.00 |
| 8899 | NBT7* 1c red on white WATERMARK, VF*, with imprint at top | 8.00 |
| 9401 | NBT7* 1c VF*, Watermarked | 3.50 |
| 13251 | NBT7a* rare p. 11 3/4 WATERMARK, VF | \$150 |
| 3253 | NBT7b* 1c red on yellow, complete imperf booklet pane, VF* | 30.00 |
| 7436 | NBT7b* 1c red on yellow, complete imperf booklet pane, WATERMARKED, VF* | 65.00 |
| 7435 | NBT7c* 1c red on white, rouletted, VF* compl. booklet pane, WATERMARKED | 13.00 |
| 11535 | NBT8* 2c VF with imprint | 5.00 |
| 8903 | NBT8,8a* pair with normal and ERROR 2c red on yellow TOBAOCO error. VF* | 15.00 |
| 5515 | NBT8b* 2c red on yellow, IMPERF cpl booklet pane of 4. VF unused | 35.00 |
| 7437 | NBT8d,c* 2c compl. booklet pane, with TOBAOCO ERROR in pos. #3, VF* | 35.00 |
| 7438 | NBT8d,c* 2c red on yellow, compl. booklet pane, with TOBAOCO ERROR in pos. #3, WATERMARKED, VF* | 70.00 |
| 5400 | NBT9* 3c red on blue, with imprint, VF* | 5.00 |
| 11536 | NBT9* 3c with imprint, watermarked | 9.00 |
| 5514 | NBT9a* 3c red on blue, WATERMARKED IMPERF booklet pane of 4, VF/Superb | 70.00 |
| 7440 | NBT10a* 5c red on pink, complete IMPERF booklet pane, VF* | 50.00 |
| 5403 | NBT11* 1c red on white, WMK, VF* | 3.00 |
| 11537 | NBT11* 1c VF with imprint at top | 5.00 |
| 9402 | NBT11* 1c VF* | 2.25 |
| 475 | NBT11* 1c Watermarked, VF* | 2.50 |
| 5404 | NBT11a* 1c, perf 11 3/4. F/VF* | 15.00 |
| 8906 | NBT11a* rare 1c p.11 3/4. VF*, WMK | 30.00 |
| 3262 | NBT11d* 1c, cpl. booklet pane, F/VF* | 7.50 |
| 3260 | NBT11d* 1c red on white, complete booklet pane, F/VF*, WATERMARKED | 15.00 |
| 7442 | NBT11e* 1c red on white, perf. 11 3/4 cpl. booklet pane, about Fine, scarce | 50.00 |
| 5406 | NBT12* 2c red/yellow, wmkd. VF* | 3.00 |
| 8907 | NBT12* 2c red on yellow. VF* | 2.00 |
| 10802 | NBT12c* 2c horizontal pair IMPERF BETWEEN, Very Fine | 195.00 |
| 3267 | NBT12d* 2c red on yellow, cpl pane, VF* | 7.50 |
| 11539 | NBT13* 3c F/VF watermarked | 3.50 |
| 8909 | NBT13* 3c red on blue, VF* | 2.00 |
| 5409 | NBT13* 3c red on blue, WATERMARKED, with IMPRINT, VF* | 5.00 |
| 7694 | NBT13b* 3c red on blue horizontal pair IMPERF BETWEEN - WATERMARKED, VF | 350.00 |
| 7446 | NBT13b* 3c red on blue, rare horizontal pair, IMPERF, F/VF | 195.00 |
| 7445 | NBT13c* 3c, cpl. booklet pane, F/VF* | 8.50 |
| 5411 | NBT14* 5c with IMPRINT, VF* | 7.00 |
| 8910 | NBT14* 5c red on pink, VF* | 4.00 |
| 5513 | NBT14d 5c red on pink, WATERMARK cpl booklet pane of 4, VF unused | 30.00 |
| 7447 | NBT14d* 5c red on pink, booklet pane | 16.00 |
| 9398 | NBV1*NH 1c VF*NH | 15.00 |
| 9213 | NBV2* 2c VF*NH | 20.00 |
| 9214 | NBV3* 5c VF*NH | 25.00 |
| 9399 | NBV3* 5c VF*NH. tiny mark | 20.00 |

take an **EXTRA 5% DISCOUNT OFF THIS PAGE** and the many other **NEW BRUNSWICK** items on canadarevenuestamps.com until May 15, 2011 - request NB discount offer

1883 & 1897 TOBACCO STAMPS

Without a doubt the most beautifully engraved stamps in the world. Magnificent engravings by the British American Banknote Co. (1883 issue) and the American Banknote Co. 1897 issue. Ac

value has a different design. All in fresh pristine condition unless noted otherwise. An occasional bend or tiny fault may be found, after all these are well over 100 years old. 1883 issue is gener

1897 issue mint are generally in

Quantities are very limited. Please include alternates. Lee Brandom catalog numbers used. **Stamps are shown at 50% to 75% of actual size. All unused unless noted otherwise. * = mint, no gum as issued. This list cancels all previous lists and offers. Satisfaction Guaranteed or your money back!**



M335 with reversed "R" at top

1883 TOBACCO STAMPS

| | | |
|---------|--|---------|
| M306 | - 15 lbs black, 4 mm blue #, no coupons | \$95 |
| M310 | - 20 lbs black, 4 mm blue # unwatermarked | \$85 |
| M332 | - 10 lbs blue, no coupons, rare used | \$100 |
| M335* | - 15 lbs blue, 5 mm red #, unwmkd, coupons, tiny fault | \$27.50 |
| M340a* | - 20 lbs blue, 4mm red #, no coupons, wmkd | \$85 |
| M342* | - 35 lbs blue, 5 mm red #, unwmkd, with coupons, small faults | \$27.50 |
| M342* | - similar, but no coupons, small faults | \$20 |
| M345* | - 60 lbs blue, 5 mm red #, unwmkd, no coupons, small faults | \$27.50 |
| M346* | - 60 lbs blue, 4 mm blue #, wmkd, with coupons | \$100 |
| M350* | - 70 lbs blue, 5 mm red #, unwmkd, with coupons | \$50 |
| M350* | - similar, but with mirror (reversed) "R" at top, with coupons | \$95 |
| M350* | - similar with reversed "R" but without coupons | \$75 |
| M352* | - 70 lbs blue, 4 mm red #, wmkd with coupons | \$100 |
| M354* | - 100 lbs blue, 4 mm red #, unwmkd, with coupons | \$60 |
| M366* | - 35 lbs green, 5 mm blue #, unwmkd, with coupons | \$27.50 |
| M370* | - 60 lbs green, 4 mm blue, fold between coupons & stamp | \$45 |
| M370* | - as above, but no coupons | \$30 |
| M372* | - 70 lbs green, 4 mm blue #, unwmkd, no coupons | \$30 |
| M372CP* | - 70 lbs green, 4 mm blue #, unwmkd with coupons overprinted "cancelled" | \$100 |

1897 TOBACCO STAMPS

| | | |
|-----------|---|---------|
| M398* | - 1 lb blue, red #, with coupons | \$22.50 |
| M398TP* | - 1 lb blue, no #s, PROOF, no coupons | \$35 |
| M400* | - 1 lb green, red #, with coupons | \$22.50 |
| M401/2TP* | - 1 lb green, without coupons, no #, PROOF, you can't tell difference between these 2 without coupons | \$35 |
| M404* | - 1 lb red, blue #, complete with 7 x 1/2 lb coupons | \$22.50 |
| M404* | - as above, but without coupons | \$15 |
| M404 | - 1 lb red, no coupons, VF genuinely used, very rare | \$75 |
| M405/6TP* | - 1 lb red, without coupons, no #, PROOF, you can't tell difference between these 2 without coupons | \$30 |
| M405TP* | - 1 lb red with 7 coupons, no #, PROOF | \$35 |
| M406TP* | - 1 lb red, no #s, PROOF, with 6 x 1/2 lb coupons | \$35 |
| M406TP* | - as above, but without coupons | \$25 |
| M416* | - 5 lb blue, red #, no coupons | \$17.50 |
| M416* | - as above, but with trace of PLATE NUMBER | \$45 |
| M417* | - 10 lbs blue, red #, with coupons | \$25 |
| M419* | - 20 lbs blue, red #, with coupons | \$25 |
| M421* | - 5 lbs green, red #, with coupons | \$30 |
| M421* | - as above, but with trace of PLATE NUMBER | \$45 |
| M421 | - 5 lbs green, red #, part coupons | \$95 |
| M421TP* | - 5 lbs green, no #s, PROOF, no coupons | \$30 |



| | | |
|---------|--|---------|
| M422* | - 10 lbs green, red #, with coupons | \$30 |
| M422* | - as above, but with PLATE NUMBER | \$50 |
| M422 | - 10 lbs green, red #, part coupons | \$95 |
| M422TP* | - 10 lbs green, no #, PROOF, no coupons | \$35 |
| M423* | - 15 lbs green, red #s, with coupons | \$22.50 |
| M423* | - as above, but with PLATE # | \$50 |
| M423TP* | - 15 lbs green, no #, PROOF, no coupons | \$27.50 |
| M424* | - 20 lbs green, red #, with coupons | \$25 |
| M424* | - as above, but with PLATE NUMBER 10 (see photo) | \$50 |
| M424* | - as above, but with PLATE NUMBER 5 | \$75 |
| M424TP* | - 20 lbs green, no #, PROOF, with coupons | \$30 |
| M430* | - 5 lbs red, blue #, with coupons | \$25 |
| M430* | - as above, but with PLATE NUMBER | \$50 |
| M430TP* | - 5 lbs red, no #, PROOF, with coupons | \$45 |
| M430* | - as above, but without coupons | \$25 |
| M432* | - 10 lbs red, blue #s, with coupons | \$30 |
| M432* | - similar, but no coupons | \$20 |
| M432* | - 10 lbs red, blue #s, with coupons with PLATE NUMBER | \$50 |
| M432TP* | - 10 lbs red, no #, PROOF, no coupons | \$30 |
| M434* | - 15 lbs red, blue #, with coupons | \$30 |
| M434* | - as above, but with PLATE NUMBER | \$50 |
| M434 | - 15 lbs red, blue #, no coupons | \$95 |
| M434TP* | - 15 lbs red, no #, PROOF, with coupons | \$45 |
| M434* | - as above, but without coupons | \$30 |
| M435* | - 20 lbs red, blue #, with coupons | \$25 |
| M435* | - as above, but with PLATE NUMBER | \$50 |
| M435TP* | - 20 lbs red, no #, PROOF, with coupons | \$30 |
| M436* | - 35 lbs red, blue #, with coupons | \$25 |
| M436* | - as above, but with PLATE NUMBER | \$50 |
| M436TP* | - 35 lbs red, no #, PROOF, no coupons | \$35 |
| M436* | - similar, but with coupons and with PLATE NUMBER | \$65 |
| M440* | - 60 lbs red, blue #s, with coupons | \$40 |
| M442* | - 70 lbs red, blue #, with coupons | \$50 |
| M442* | - as above, but without coupons | \$25 |
| M450 | - 10 lb black, King Geo. V., genuinely used, rare, faults | \$125 |



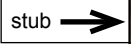
DISCOUNTS THIS PAGE: orders over \$50 - 5% discount, over \$500 - 10% discount over \$2500 - 15%, over \$7500 - 20% discount

RARE 1883 TOBACCO STAMPS COMPLETE WITH COUPONS & STUB

This is how these stamps were originally issued and are very rare thus. Most tobaccos seen today havd the stubs removed. These are exceptional.

Photos are about 60% of actual size.

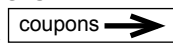
All are Very Rare. * = mint as issued without gum.



- M319PP* - 60 lbs black, PLATE PROOF on heavy wove paper, no control # \$200
- M335* - 15 lbs blue, red control #, unwatermarked, "189_" in date, 5 mm control # \$125
- M342* - 35 lbs blue, unwatermarked, "189_" date in stub, 5 mm control # \$125
- M342* - similar with about 1/2" hole through "A" of "Canada", still nice..... \$50
- M345* - 60 lbs blue, unwatermarked, 5 mm red control # \$125
- M350* - 70 lbs blue, unwatermarked, "188_" date in stub, 5 mm #, fold in stub results in 1/2" separation..... \$125
- M352* - 70 lbs blue, wmkd, 4 mm red #, rejoined stub. RARE \$150
- M354* - 100 lbs blue, unwmkd, 4 mm red #..... \$150
- M356aPP* - 5 lb green, imperf PLATE PROOF on heavy wove paper. o/p "CANCELLED". \$200
- M366* - 35 lbs green, unwmkd, 5 mm blue #, small thin and coupon irregular at top \$125
- M370* - 60 lbs green, unwmkd, 4 mm blue #, fold in stub \$125
- M372* - 70 lbs green, blue control #, no wmk, 4 mm blue #, "188_" date on stub..... \$125

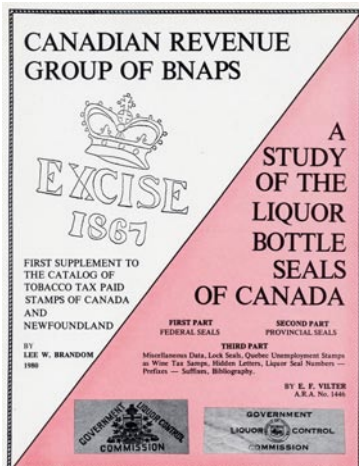
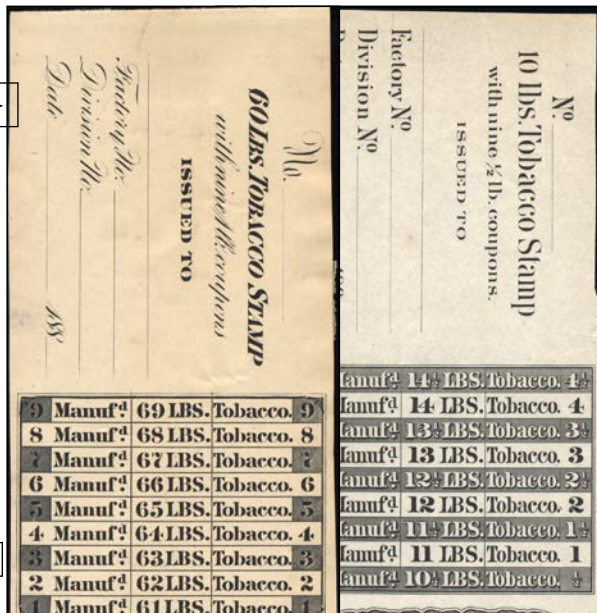
RARE 1897 TOBACCO STAMPS COMPLETE WITH COUPONS & STUB.

Very Rare. * = mint as issued without gum.

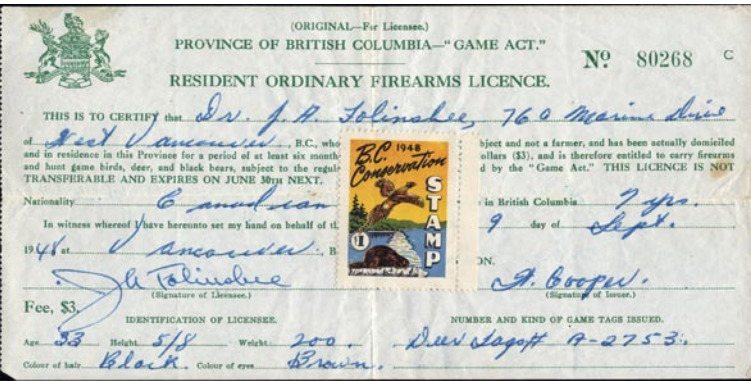


These stamps were originally bound in a ledger tobacco book.

- M398TP - 1 lb blue, no #, PROOF, roller cancel "TOBACCO A20", light bend \$175
- M400DP* - 1 lb green imperf PROOF on card, no #, die #382 on reverse, minor aging \$250
- M406TP* - 1 lb red, PROOF, no control # \$175
- M417* - 10 lbs blue, red control #, "190_" in date \$125
- M417TP - as above, PROOF, no control #, "TOBACCO A20" cancel \$125
- M419* - 20 lbs blue, red control #, "190_" in date \$125
- M422* - 10 lbs green, red #, "190_" in date \$125
- M422TP* - as above, PROOF, no control #, "189_" in date \$125
- M422TPCP - as above overprinted "CANCELLED", "TOBACCO A20" cancel \$150
- M422TPCP* - similar to M422TP, but overprinted "REGISTERED" + "CANCELLED" \$175
- M423* - 15 lbs green, red #, "190_" in date \$125
- M423TP - similar, PROOF, no control #, "TOBACCO A20" cancel \$125
- M423TPCP* - similar to M423, PROOF, no #, o/p "CANCELLED" + "REGISTERED" \$175
- M424* - 20 lbs green, red control #, "190_" in date, fold between stamp & coupon \$125
- M424TP - 20 lbs green, PROOF, no #, "TOBACCO A20" cancel \$125
- M424TP* - 20 lbs green, PROOF, no #, "OTTAWA #5" imprint \$225
- M430* - 5 lb red, blue control numbers, "190_" in date \$125
- M430TP - 5 lb red, PROOF, no #, "189_" in date, "TOBACCO A20" cancel \$150
- M432TP* - 10 lb red, PROOF, no #, "189_" in date \$125
- M432TP - as above, but with "TOBACCO A20" cancel \$150
- M434* - 15 lb red, blue #, "190_" in date \$125
- M434* - 15 lb red, blue #, "190_" in date, with "OTTAWA #8" imprint \$175
- M435* - 20 lbs red, blue #, "190_" in date \$125
- M440* - 60 lbs red, blue #, "190_" in date \$125
- M442* - 70 lbs red, blue #, "190_" in date \$125



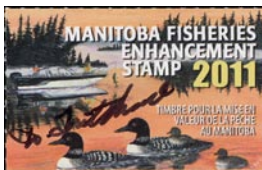
Lee Brandom Supplement to Canada & Newfoundland taxpaid & Study of the Liquor stamps of Canada & Provinces. 1980 edition, brand new, very useful - only \$20 + Air Mail postage & packing to Canada \$4, to USA \$8, Overseas \$15



very rare BCD3d on 1948 British Columbia License - \$1250



FPS20 - the rare 75c Postal Note value missing from most collection. Fine used with straight edge - only 5 available Cat \$50.....only \$27.50



MBF19s - 2011 artist signed single - \$10



MBF19 - 2011 Manitoba Fishing
"Family Fishing" by Douglas Tritthart
MBF19 single stamp \$6.00
MBF19A pane of 10 \$50.00

DISCOUNTS THIS PAGE: orders over \$50 - 5% discount, over \$500 - 10% over \$2500 - 15%, over \$7500 - 20%

Some covers are one of a kind - in which case (1) is shown in the description. Catalogue #'s are from Unitrade and American Air Mail Society catalogues.



CL10-2600 -- Elliott - Fairchild Air Service
August 12, 1926 FF cover Haileybury to Rouyn.
Special 2 line cachet. **PILOT SIGNED.**
(1) Cat. \$225 - my price \$195



CL48-3100 -- Commercial Airways, Feb 12, 1931
FF cover **Peace River to Edmonton.** special green
diamond shape cachet. Cat. \$50 my price only \$40



CL49-2900 - 10c dark purple 'VIA AIR' on
FF cover July 23, 1930 Edmonton to Fort McMurray.
Purple octagon shaped cachet. Scarce - \$225
similar, but stamp has bit of toning (1) - \$169



CL47-2900 - 10c black COMMERCIAL AIRWAYS
"VIA AIR" on May 21, 1929 FF cover Edmonton to
Grande Prairie. Cat. value for just the stamp is \$125
Cover cat. value shown in catalog is incorrect.
without the usual flap toning VF (1) - \$99
similar with typical light gum toning of flap - \$55



CL48-3101a -- Commercial Airways
Feb 23, 1931 FF cover Athabaska to Edmonton.
Special octagon cachet. Cat. \$50 my price only \$40



CL49-2900 - 10c purple 'VIA AIR' on
FF cover July 23, 1930 Edmonton to Fort McMurray.
Purple octagon shaped cachet + additional 4 lines
"AIR BASES" cancel (see insert) Scarce - \$250



CL47-2900a - 10c black COMMERCIAL AIRWAYS
"VIA AIR" on May 21, 1929 FF cover Grande Prairie
to Edmonton. Cat. value for just the stamp is \$125 and
cover cat. value shown is incorrect.
without the usual flap toning. VF (1) - \$99



CL48-3101a variety - feb 23, 1931 FF Athabaska to
Edmonton to Teaneck, NJ (Feb 27) . Covers with non-
Canadian destination are much scarcer (1)..... \$75



CL49 - 10c purple UNLISTED FLIGHT
August 7, 1930. A very unusual cover from Edmonton
(August 6) to Fort McMurray (August 7) to Estevan, SK
(no receiver). Scarce cover (1) - \$495



CL47a-2900 - 10c black COMMERCIAL AIRWAYS
"VIA AIR" on May 21, 1929 FF cover Grande Prairie to
Edmonton. small fault at bottom of cover. Rarely seen
broken "C" in "Commercial" variety. Typical gum
toning of flap - scarce on cover (1) - \$195



CL48-3101b -- Commercial Airways
Feb. 24, 1931 FF cover Edmonton to Athabaska.
special octagon cachet. cat. \$50 my price ... \$40



CL50-3000 -- 10c orange Commercial Airways.
Dec 9, 1930 FDC Edmonton to Fort McMurray. 5 line
red boxed cachet. Cat. \$80. My price just .. \$65
similar, but addressed to USA with additional
Orange, Cal., USA cancel (1) - \$70



CL48-3000 -- Commercial Airways
Dec 6, 1930 first flight cover Edmonton to Peace
River, special octagon cachet. Cat \$50 - only \$40



CL48-3101c Commercial Airways. Feb 24, 1931 FF
cover Athabaska to Fort McMurray with special purple
diamond shaped cachet. Cat. \$50 My price just . \$40



CL50-3100b -- 10c orange Commercial Airways
Feb 24, 1931 FF cover Edmonton to Athabaska.
purple octagon shaped cachet. Cat. \$80 only \$65
similar, additional Albion, PA, USA cancel (1) - \$85

See our very extensive stock
of Semi-Official Air Mail stamps and covers on
CANADAREVENUESTAMPS.COM